

PART OF THE SE. 1/4, SEC. 23, T.5N., R.1W., S.L.B. & M.

190

RAINTREE SUBDIVISION NO. 2

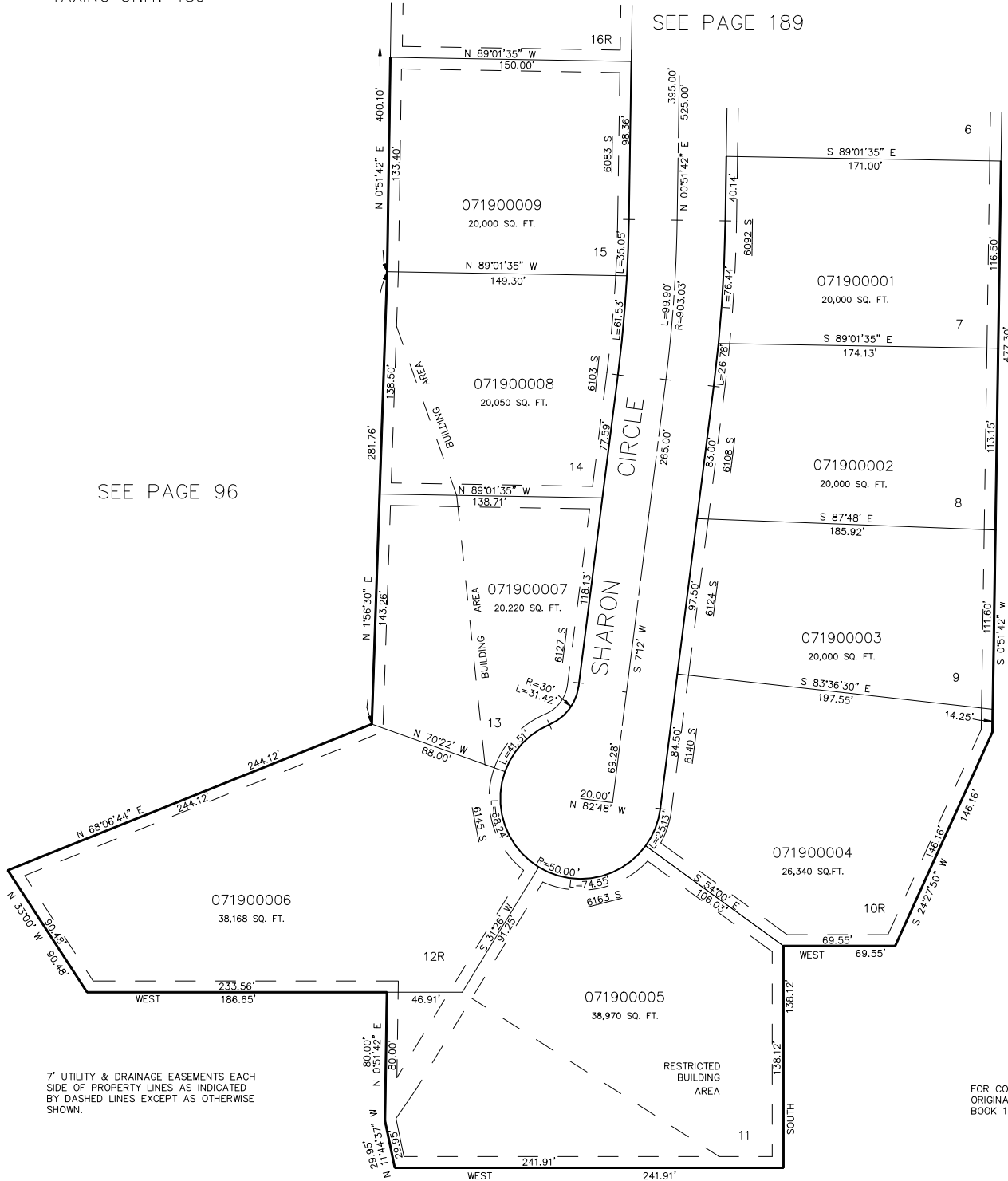
LOTS 7-15
IN WEBER COUNTY
SCALE 1" = 50'

TAXING UNIT: 159

SEE PAGE 189

SEE PAGE 96

SEE PAGE 96



FOR COMPLETE ENG DATA SEE
ORIGINAL DEDICATION PLAT IN
BOOK 19, PAGE 74 OF RECORDS.